

# Ice Arena Wales

Appendix 3

Completed in 2016 the Ice Arena was built not only to provide a permanent home for the Cardiff Devils ice hockey team, who play in the top tier of ice hockey in the UK - the British Elite Ice Hockey League.

Also, this also to provide a permanent multipurpose ice facility for the various clubs and a public facilities for the City.





It is a striking building of steel frame construction with dark to silver metal cladding with a gently raked roofs with angled walls that give the building a distinct character which extends to approximately 8,336m<sup>2</sup> (89,728 ft<sup>2</sup>) Gross Internal Area (including areas of plant and services).





The Ice Arena comprises two ice rinks or 'pads'.

1. The main rink being 60m x 30m and primarily used for competition and training, with a seating capacity of 3,100.



2. The smaller rink is 54m x 27m and is the main public rink with no seating provision.

The comprehensive accommodation is arranged over two floors as follows:-

### **Ground Floor -**

- Foyer entrance with reception desk and office
- Skate Hire and shoe change area with access to 'pad' 2
- Skate Shop
- The Grazing Shed café – with seating for approximately 50, and ancillary kitchen with servery

### **Also:**

- Public changing rooms
- First aid and toilet facilities
- Team changing
- Staff Changing
- Meeting Rooms
- Storage
- Ice Cleaning and Resurfacing Equipment
- Devils Ticket Office
- Plant Room
- Physiotherapy Suite





## **First Floor - Served by various stairs and two lifts**

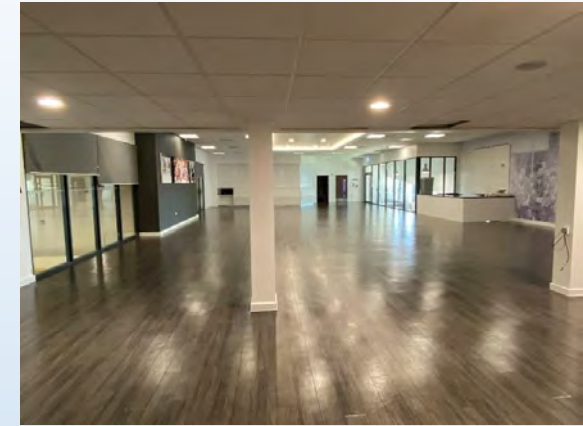
- Main tier of seating to pad 1 with rear circulation walkway.
- Licensed Bar – overlooking pad 2 and providing an open plan space with server
- Storage and office.
- Public toilets .
- Hospitality boxes x 4
- Players weights room / gym.
- Players ice shots room / simulator.

## **Mezzanine - Accessed via a gantry at first floor**

- Providing a mezzanine area with 'TV' gantry overlooking pad 1, with roof access.

## **Roof Level**

- Building cooling plant and machinery.



## Floor Area

Architects2 floor plans indicate the following Gross Internal floor areas

Level	GIA M <sup>2</sup>	GIA FT <sup>2</sup>
Ground	5,297	57,017
Ground - Plant & Services	183	1,970
First	2,736	29,450
First - Plant & Services	120	1,291
<b>Total</b>	<b>8,336</b>	<b>89,728</b>